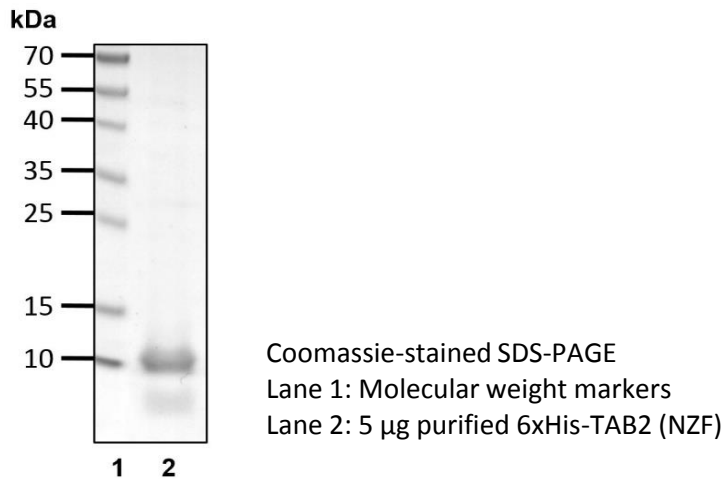


# 6xHis-TAB2 (NZF)

Cat. # I1710, I1711

**Also Known as:** CHTD2; MAP3K7IP2  
**NCBI Reference:** NM\_015093.4  
**MW (no tag):** 7.7 kDa  
**Species:** Human  
**Source:** Bacterial recombinant  
**Tag:** 6xHis  
**Stock Buffer:** 20 mM Tris, 150 mM NaCl, 2 mM  $\beta$ ME, 10% Glycerol  
**Concentration:** See tube label  
**Quality Assurance:** ~85% by SDS-PAGE

Image



**Description:** 6xHis was fused on the N-terminus of the lysine 63 polyubiquitin chain binding domain of TAB2 encompassing amino acids 627-693. This fusion protein can be used for in vitro pulldown assays and for enrichment of cellular proteins conjugated with lysine 63 polyubiquitin chains in whole cell or tissue lysates. 6xHis-TAB2 (NZF) can be precipitated using Nickel resin. After washing, 6xHis-TAB2 (NZF) and its bound proteins can be eluted by a buffer containing 200 mM imidazole.

**Storage:** Store at -80°C; avoid multiple freeze-thaw cycles

**Note:** N/A

**Literature:**  
1. van Wijk SJ, *et al.* (2013) Nat Protoc. 8(7):1449-58  
2. van Wijk SJ, *et al.* (2012) Mol Cell. 14;47(5):797-809

